

printer model MK4

## Material

filament type PETG

filament used 44.15g / 14452.72mm / 34760mm<sup>3</sup>

filament costs 1.6

bed temperature 90°C

nozzle temperature 250°C

## Print settings

nozzle diameter 0.4mm

layer height 0.2mm

infill density 20%

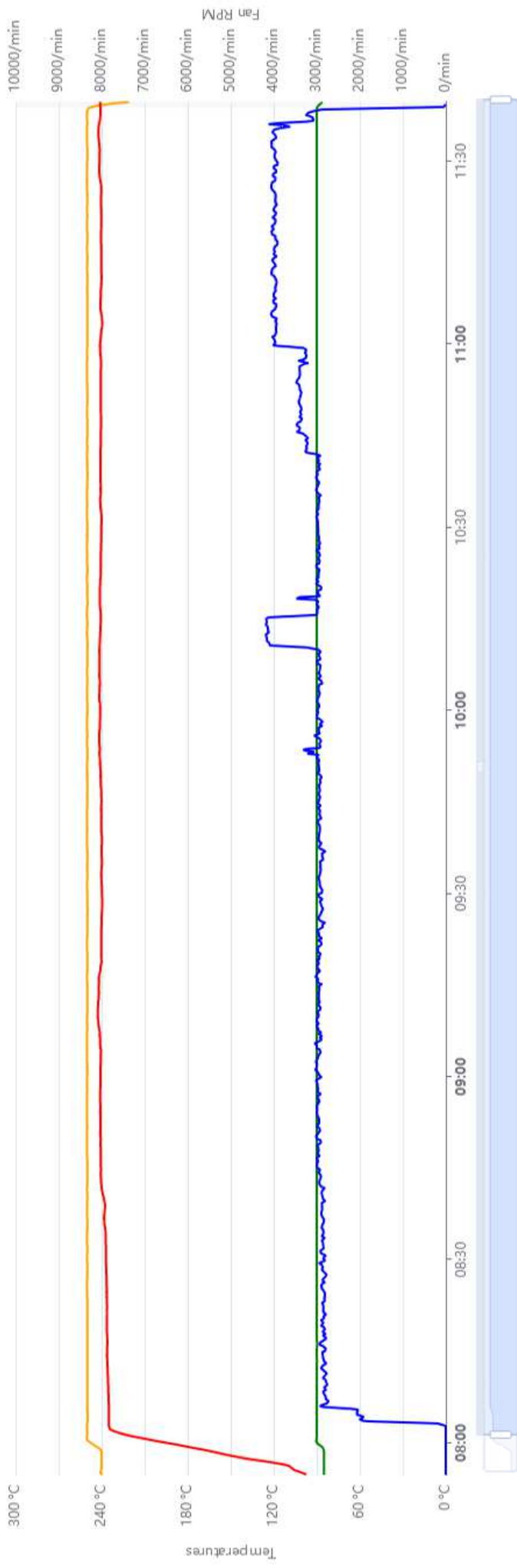
support material yes

Start Print

Add to print queue

## Thermometry

—○— Nozzle temperature —○— Bed temperature —○— Extruder fan speed —○— Print fan speed



**Printer**

printer model MK4

**Material**

filament type PETG  
 filament used 6.98g / 2284.95mm / 5500mm<sup>s</sup>  
 filament costs 0.25  
 bed temperature 90°C  
 nozzle temperature 250°C

**Print settings**

nozzle diameter 0.4mm  
 layer height 0.2mm  
 infill density 20%  
 support material yes

[Start Print](#) [Add to print queue](#)

**Telemetry**

—○— Nozzle temperature 
 —○— Bed temperature 
 —○— Extruder fan speed 
 —○— Print fan speed

