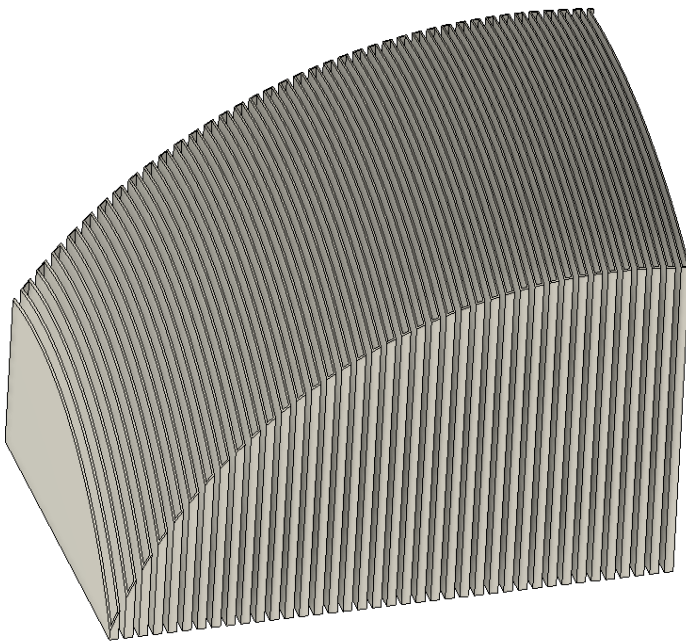
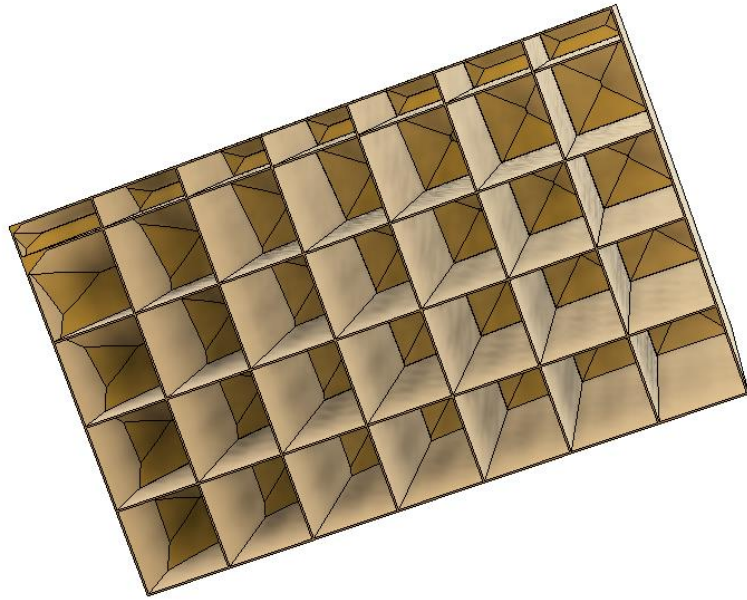


Printed arbitrary example model



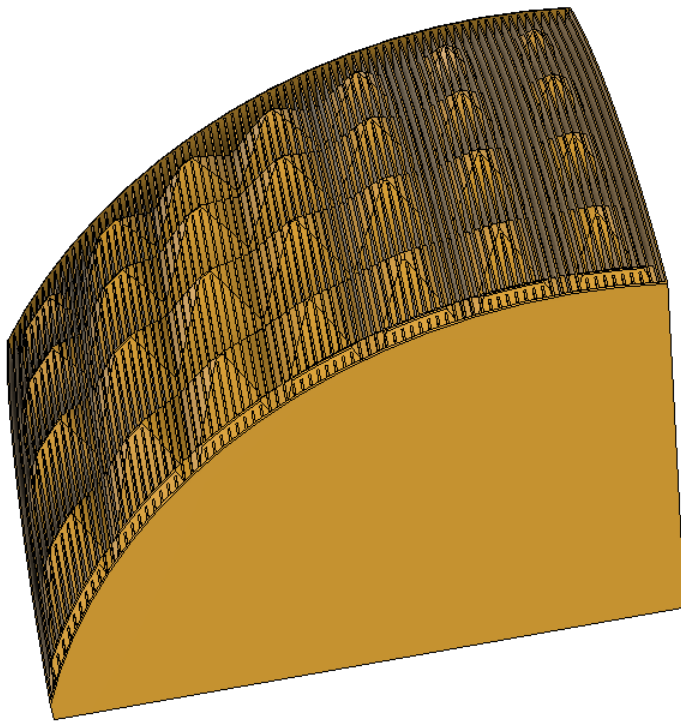
2mm rectilinear support model. Dense support is printed over this but not shown for clarity.

Support weight = 244gr.



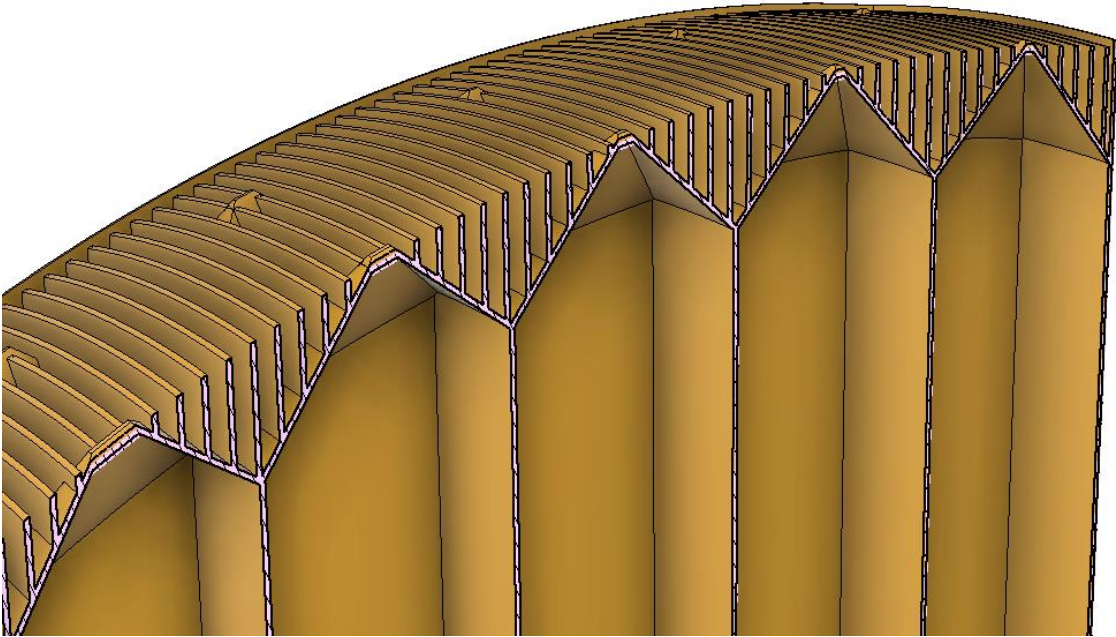
Proposed coarse support 20x20mm - bottom view.

Note tips converge in pyramids creating a solid elevated surface that is mostly hollow



Top view showing regular rectilinear support on top of the coarse support structure.

Dense support is printed over this and the model over it as usual. Weight = 75 gr. only!



Cutout detail showing the interface between the multi-pyramid top surface of the coarse support and the regular support continuing up to the dense support (not shown) as usual.